

Organic Farming of Rice/Paddy

Paddy (*Oryza sativa*) is an important cereal crop of our country. About 70% of the world's population has adopted the rice as easily available nutritious food. On an average, farmers lose about 37% of their production every year due to pests and diseases. But in addition to good crop management, timely and accurate diagnosis can significantly reduce the losses.

Adopt the following **strategies** for the management of various Rice/Paddy pests & diseases and plant nutrition to get higher yield and residue free farm produces

- Selection of healthy seeds or resistant /tolerant varieties according to local suitability.
- Raising of healthy Nursery with timely sowing/planting.
- Transplanted Paddy is best suited to well drained and medium loamy or black soils.
- While the black soil is more suitable to nursery beds as it stores more moisture.
- Alternate wetting and drying is advised to avoid water stagnation in plant hopper endemic area.

- Before transplanting, take green manure crop of Ikkad or Sunhamp (60 to 75 kg / ha) or apply 10 tons of manure (FYM) and plough the soil deeply and then fill with water.
- Avoid excessive doses of nitrogen.
- Remove and destroy disease/pest infested plant parts.
- Collect and destroy egg masses and larvae.
- Keep Monitoring the incidence of pests through light traps and sex pheromone traps for rice stem borer and leaf folder.

Major Pests



Brown plant Hopper



Yellow Stem Borer



Leaf Folder



Rice Hispa

Major Diseases



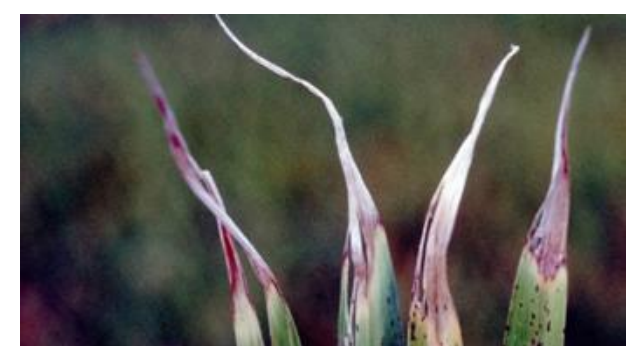
Sheath Blight



Bacterial Leaf Blight



Leaf Spot



White Tip Nematodes

Natural Enemies of Rice/Paddy Pests



Ladybird Beetle



Chrysoperla

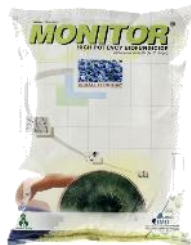


Predatory spider



Trichogramma chilonis

Recommended Products Per Acre of Land



Monitor
500 gms



Sudozone
500 gms



Yorker
250 gms



Biosoft
500 gms



Biofield Combo
3 kgs



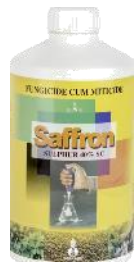
Antity
500 ml



Lifeline
500 ml



Mycozone
100 gms



Saffron
1 kg



Biofield
1 ltr



SmartZINC
500 ml



Runoff 100
250 ml



Vanguard
1500 ppm-1 ltr



Yellow / Blue
Sticky Traps 40 nos



Solar Light Sticky
Trap 1 nos



NoMate Pheromone
Traps 20 nos

Nursery Seed Bed Management

- Nursery bed should be selected at medium height and near irrigation facility, the area must be weed free and, in the place, where there was no disease in the paddy grown in the previous year.
- Ploughing and cultivating the land and make it levelled for better seed germination.
- Also apply 1 ton of FYM or compost to the nursery bed.
- Flooding nursery with water so that the larvae may come out from the soil and eaten away by birds.
- Afterwards it should be puddled twice, and the puddling may be repeated after a gap of one week.
- Clipping tips of leaf blades before transplanting to eliminate eggs of rice yellow stem borer and rice hispa.
- Use Monitor @ 250 gm/acre plus Yorker @ 250 gm/acre plus Sudozone @ 500 kg/acre for prevention of most of seed borne and soil borne fungal, bacterial and nematode diseases of paddy in nursery.
- To apply Biosoft or Metasoft @ 250 gm/acre for all types of insect pests like yellow stem borer larvae, leaf folder larvae, rice hispa, rice hopper and other pests in paddy nursery.
- Apply Biofield Combo @ 3 kg/acre for the supplement of nitrogen, phosphorus and potash bacteria to the plant.
- Apply Mycozone @ 100 gm/acre soil for better rooting and to develop resistance against soil borne pathogens. It also helps making overall development of plants.

Transplantation Of Paddy In The Main Field

- Ensure thorough land preparation. Proper puddling and harrowing to be done for uniform standing of water.
- Prepare slurry of 100 gm Monitor mixed with 100 gm of Mycozone in 15 lit water and dip the seedling for 15 minutes for reduction of plant diseases and vigorous rooting and establishment of seedlings.
- Soil broacasting of Monitor @ 250 gm, Sudozone @ 500 gm and Yorker @ 250 gm, all for 1 acre with 50 kg of clay or sand will help significantly in the reduction of seed & soil borne pathogens in main field.
- Spray Biofield liquid @ 500 ml/acre plus Biosoft @ 250 gm/acre for control of various insect-pests of paddy and overall growth of plants.
- Install solar light trap 1 trap/acre to monitor and control the different insect pests of paddy.
- After 30 days of transplanting, apply Biofield combo @ 3 kg/acre, SmartZINC @ 250 ml/acre and Saffron @ 500 gm/acre, all apply on soil by mixing with 50 kg of clay or sand or Fertilizer.
- After 45 days of transplanting, to provide nutrient and to control sucking types of pests in paddy field, apply Azospee @ 500 ml/acre, Biomobile-K @ 500 ml/acre, Biosmart-Zn @ 500 ml/acre for Nitrogen fixation, Potash mobilization and Zinc solubilization. Mix Biosoft @ 250 gm/acre with 50 kg of clay or sand and blow in the paddy field.

Surface
Technology



ISO
9001:2015



IMO
Approved



GeM
Approved



DSIR Approved R&D
Center



ZED
Certification



CRISIL MSE 2 Rated
Company



We are the leading agri-biotechnology company in the nation, pioneering in the area of research and development of environmentally friendly plant protection products.



36, Prince Industry Estate,
Mota-Motipura, 391520 (Samlaya),
Taluka - Savli, District - Vadodara,
Gujarat, India